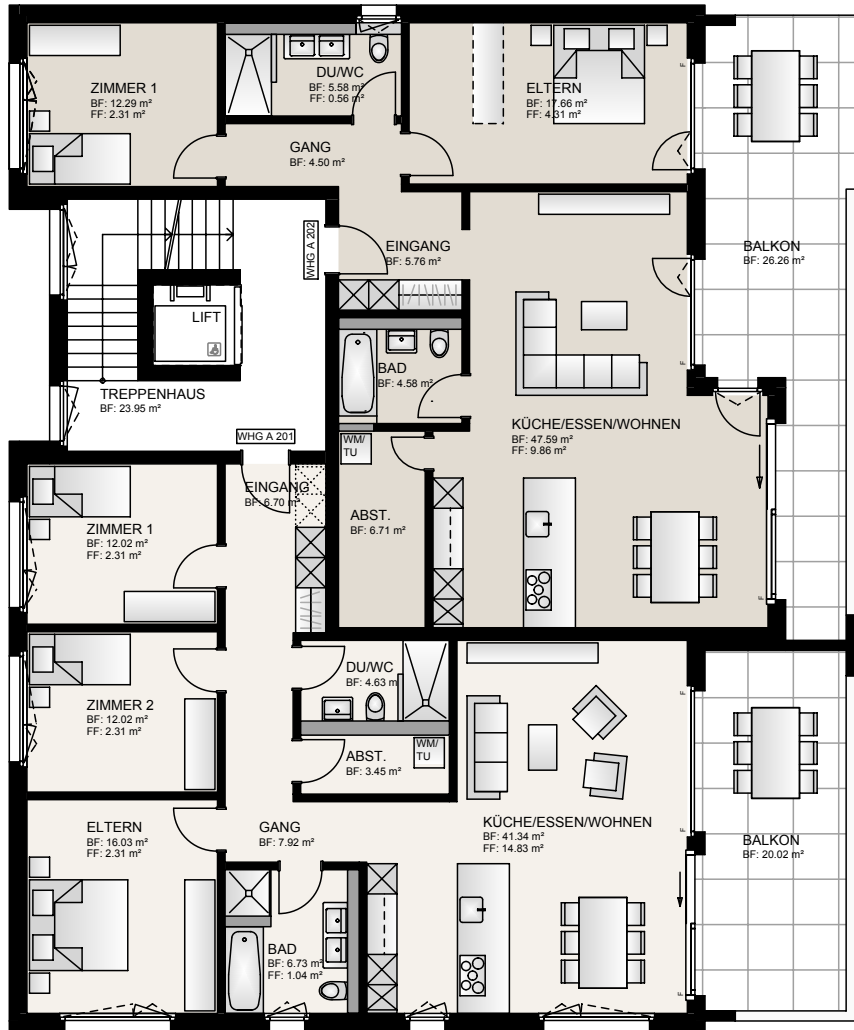
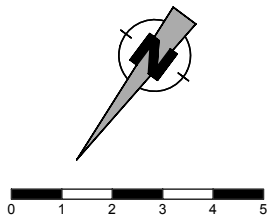


3½ - ZIMMER-WOHNUNG
2. OBERGESCHOSS

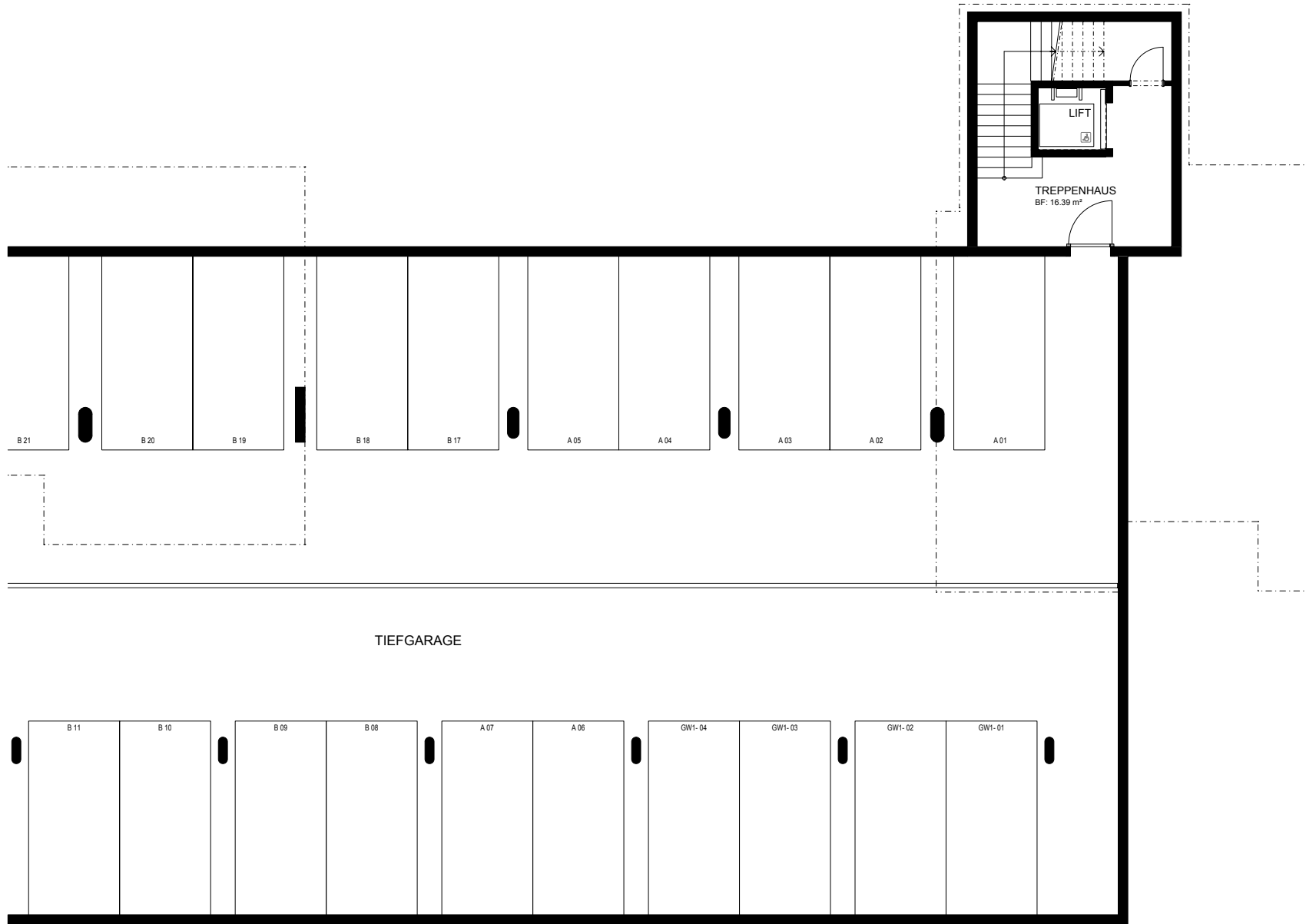
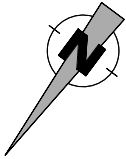
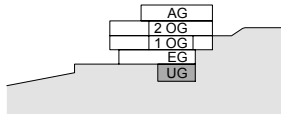
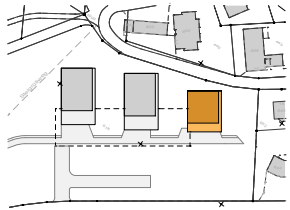
WOHNUNG NR. A 202
BRUTTOGESCHOSSFLÄCHE: CA 125 m²
NETTOGESCHOSSFLÄCHE: CA 103 m²
BALKON: CA 26 m²

4½ - ZIMMER-WOHNUNG
2. OBERGESCHOSS

WOHNUNG NR. A 201
BRUTTOGESCHOSSFLÄCHE: CA 131 m²
NETTOGESCHOSSFLÄCHE: CA 110 m²
BALKON: CA 20 m²



**ÜBERBAUUNG STEIGRÜTI, 9620 LICHTENSTEIG
HAUS A**



ÜBERBAUUNG STEIGRÜTI, 9620 LICHTENSTEIG
HAUS A